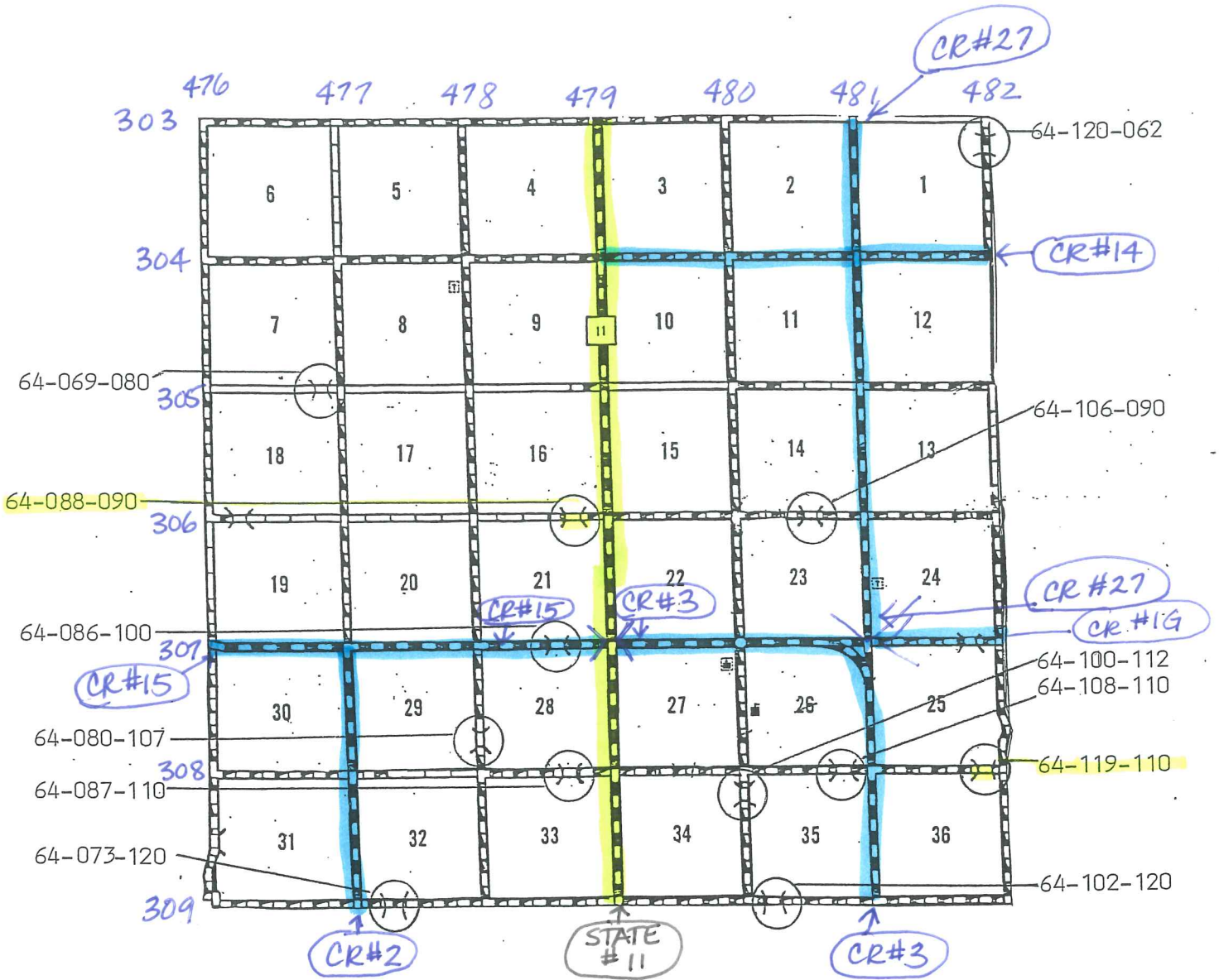


UNION COUNTY 2012 BRIDGE INSPECTIONS



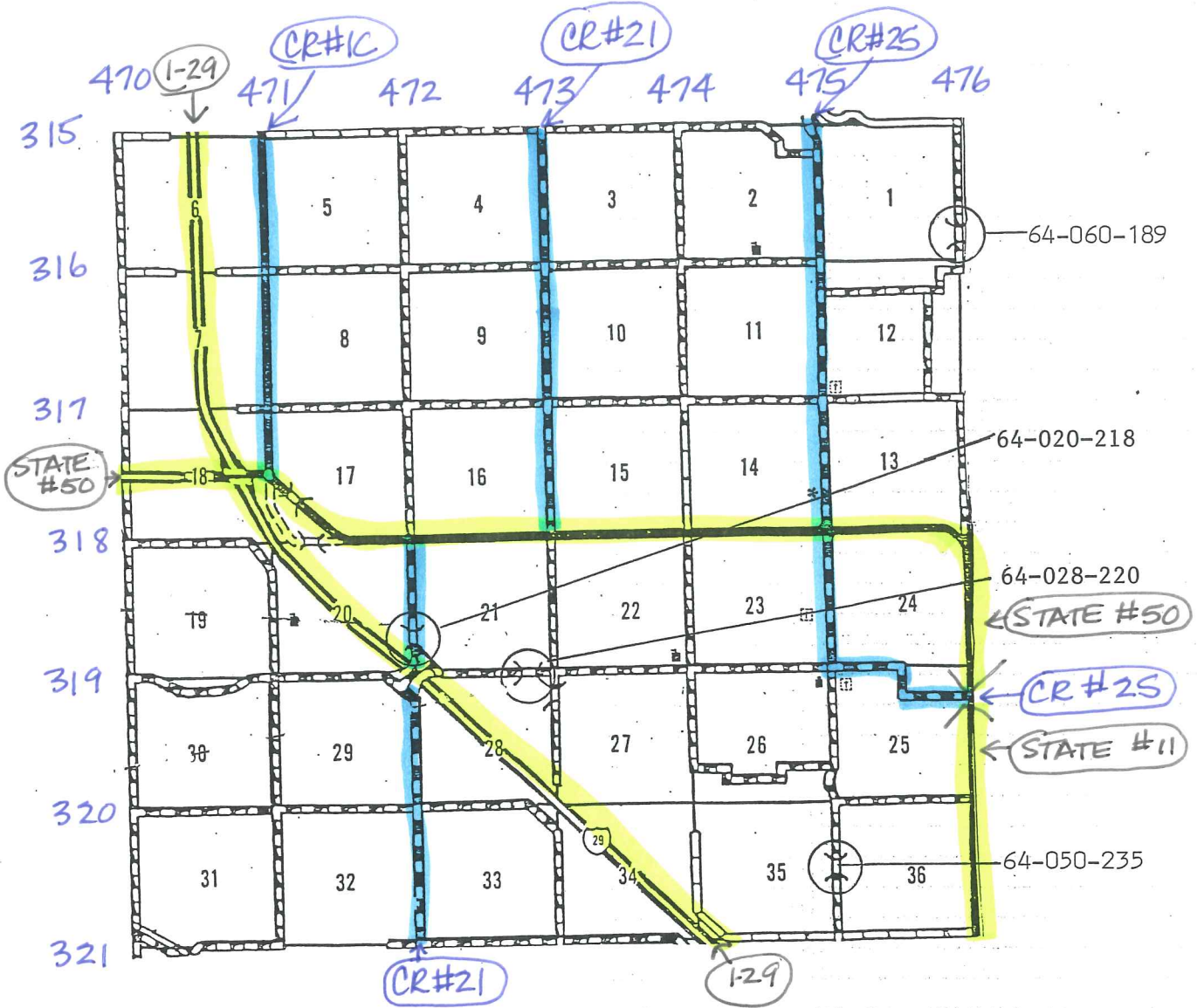
BIG SPRINGS TOWNSHIP

T 94 N R 49 W

POSTING

64-069-080	LEGAL
64-073-120	LEGAL
64-080-107	LEGAL
64-086-100	LEGAL
64-087-110	LEGAL
64-088-090	← 20-32-38
64-100-112	LEGAL
64-102-120	LEGAL
64-106-090	LEGAL
64-108-110	LEGAL
64-119-110	← 20-33-35
64-120-062	LEGAL

UNION COUNTY 2012 BRIDGE INSPECTIONS



BRULE TOWNSHIP

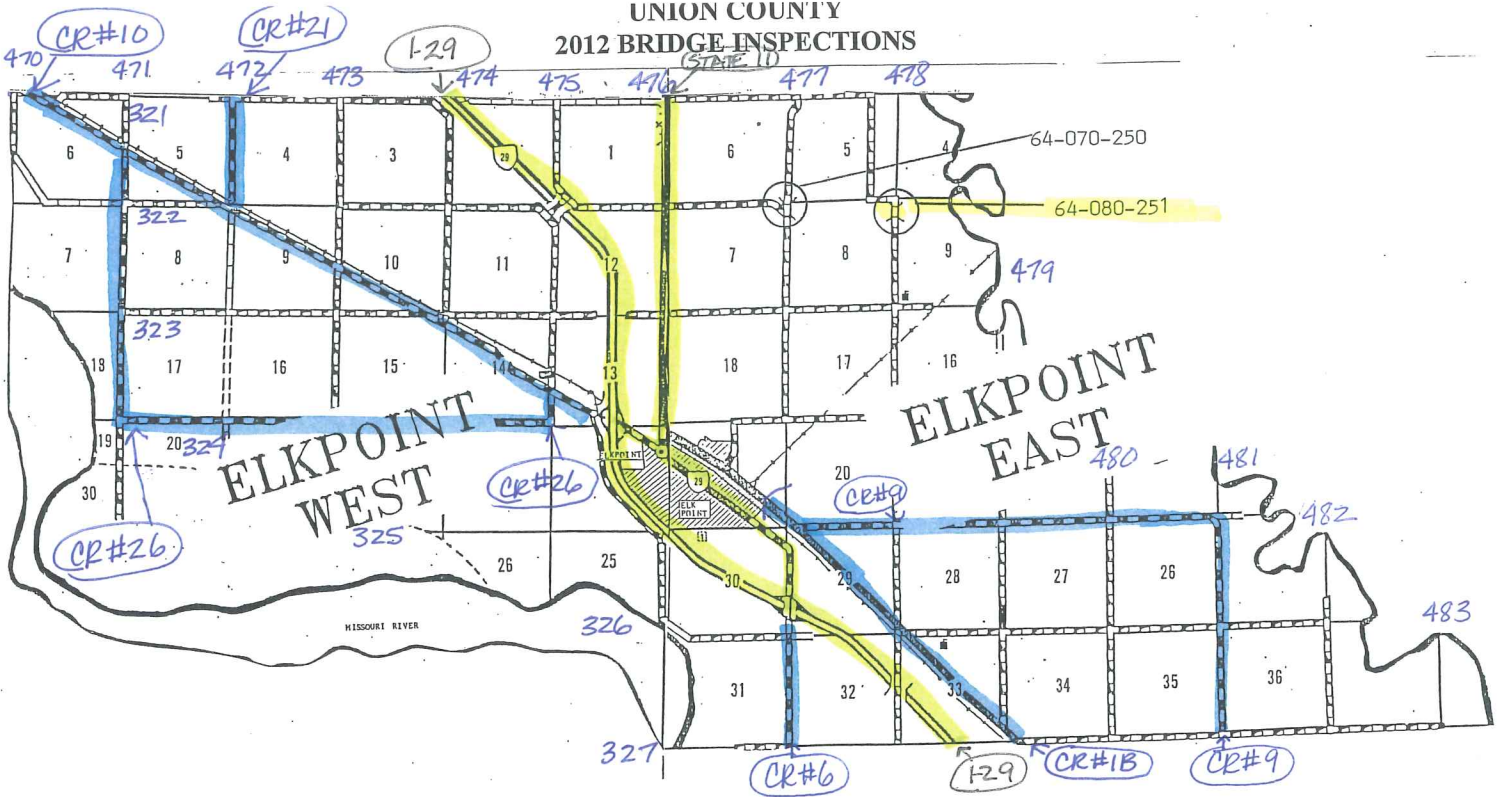
T 92 N R 50 W

POSTING

64-020-218
64-028-220
64-050-235
64-060-189

LEGAL
LEGAL
LEGAL
LEGAL

UNION COUNTY
2012 BRIDGE INSPECTIONS



ELK POINT EAST TOWNSHIP

T 91 N R 49 W

64-070-250

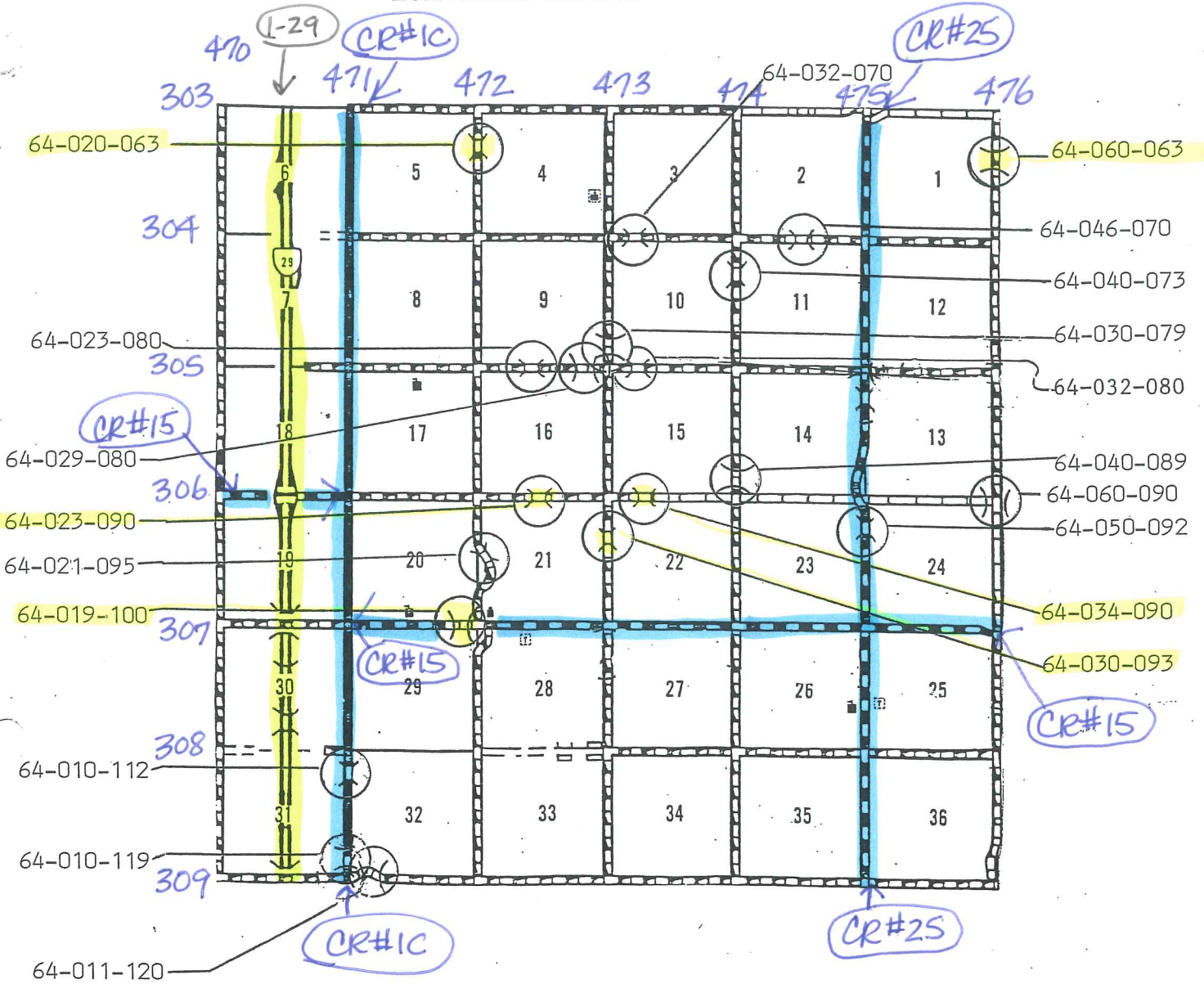
64-080-251

POSTING

LEGAL

← 21-36-41

UNION COUNTY 2012 BRIDGE INSPECTIONS

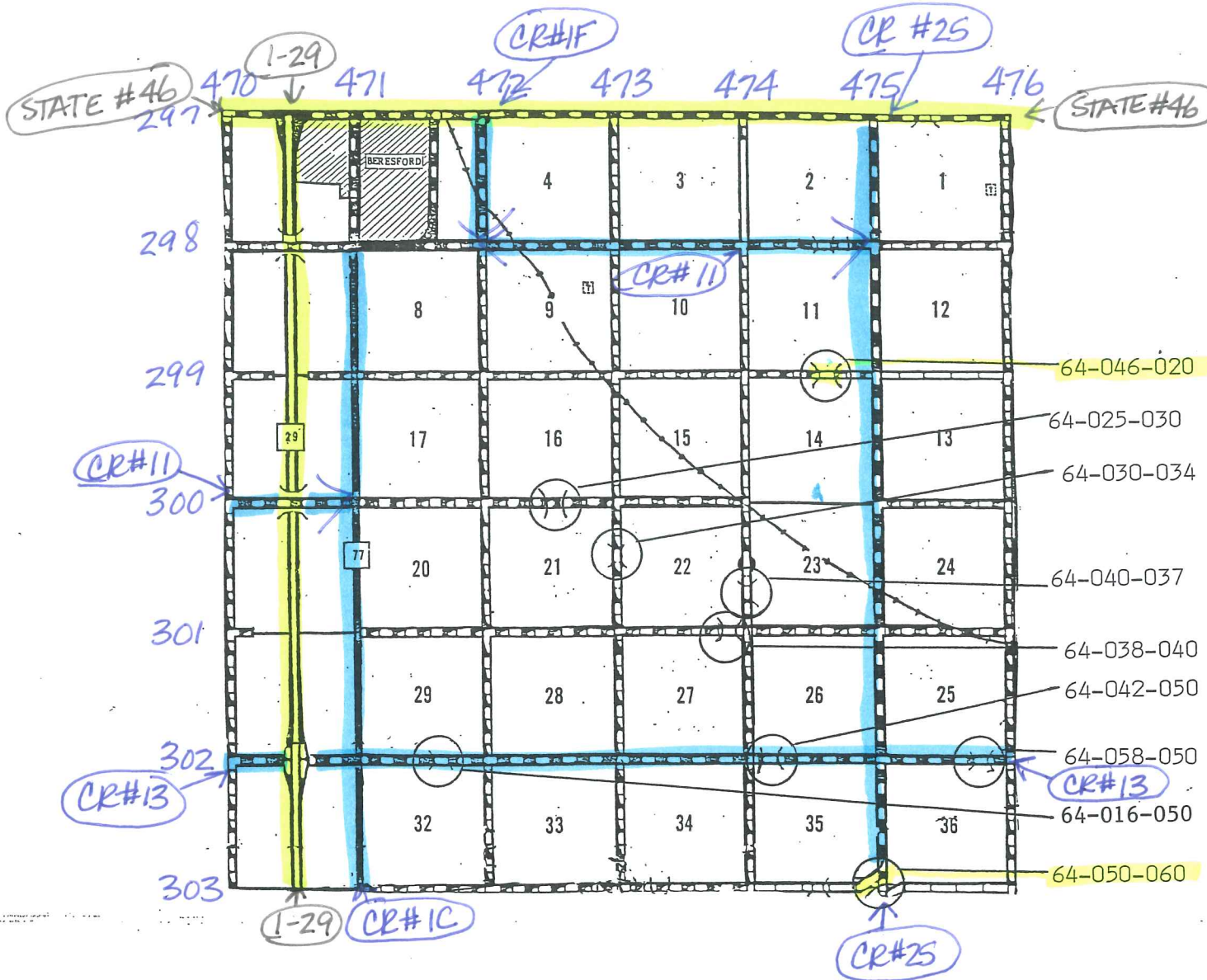


EMMET TOWNSHIP

T 94 N R 50 W

POSTING		POSTING
LEGAL	64-010-112	64-030-093 ← 12-20-23
LEGAL	64-010-119	64-032-070 LEGAL
LEGAL	64-011-120	64-032-080 LEGAL
12-20-23 →	64-019-100	64-034-090 ← 21-36-41
21-36-41 →	64-020-063	64-040-073 LEGAL
LEGAL	64-021-095	64-040-089 LEGAL
LEGAL	64-023-080	64-046-070 LEGAL
12-20-23 →	64-023-090	64-050-092 LEGAL
LEGAL	64-029-080	64-060-063 ← 12-20-23
LEGAL	64-030-079	64-060-090 LEGAL

**UNION COUNTY
2012 BRIDGE INSPECTIONS**

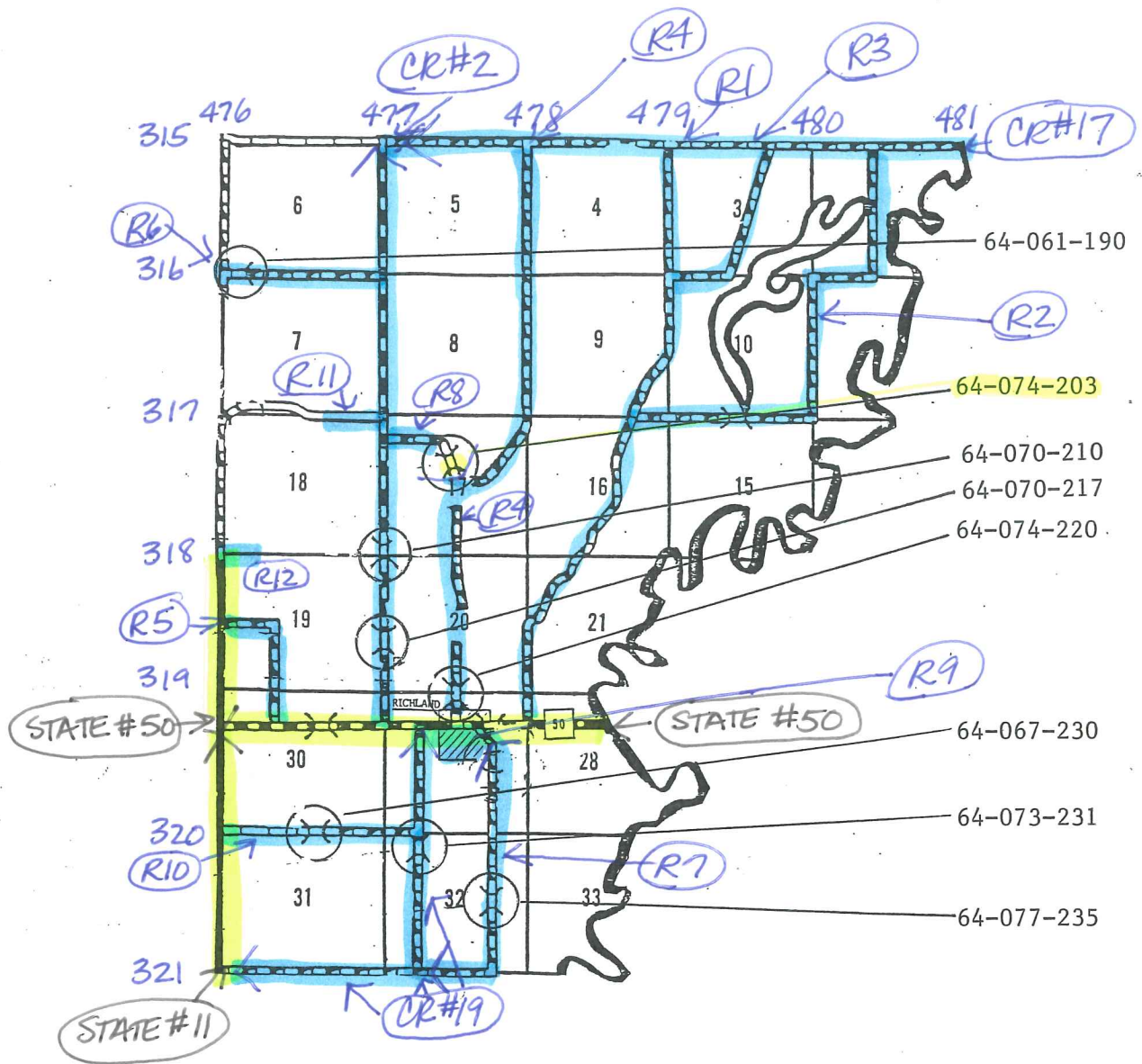


PRAIRIE TOWNSHIP

T 95 N R 50 W

	<u>POSTING</u>
64-016-050	LEGAL
64-025-030	LEGAL
64-030-034	LEGAL
64-038-040	LEGAL
64-040-037	LEGAL
64-042-050	LEGAL
64-046-020	← 21-36-41
64-050-060	← 6-10-11
64-058-050	LEGAL

UNION COUNTY 2012 BRIDGE INSPECTIONS

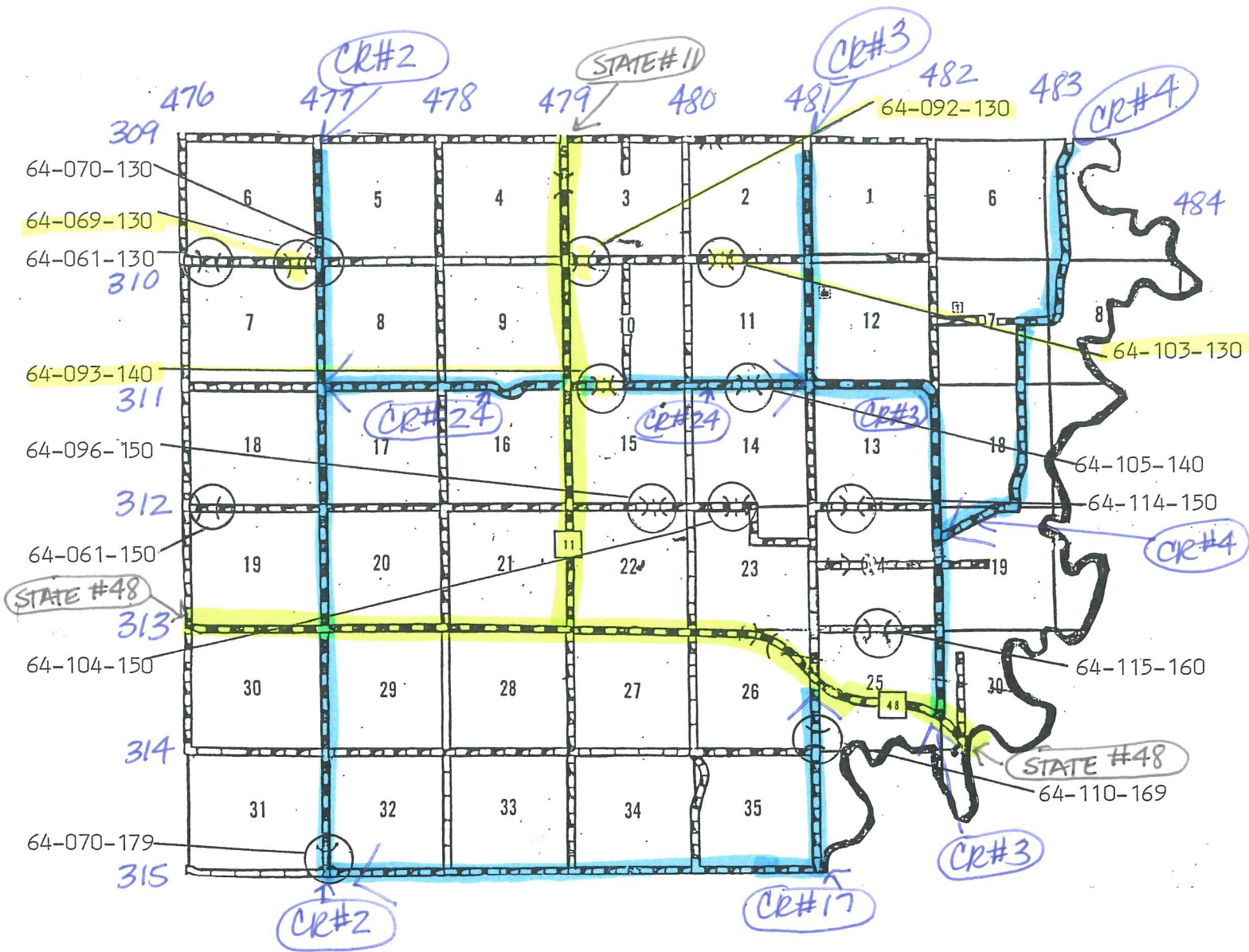


RICHLAND TOWNSHIP

T 92 N R 49 W

	<u>POSTING</u>
64-061-190	LEGAL
64-067-230	LEGAL
64-070-210	LEGAL
64-070-217	LEGAL
64-073-231	LEGAL
64-074-203 ←	22-31-33
64-074-220	LEGAL
64-077-235	LEGAL

UNION COUNTY 2012 BRIDGE INSPECTIONS

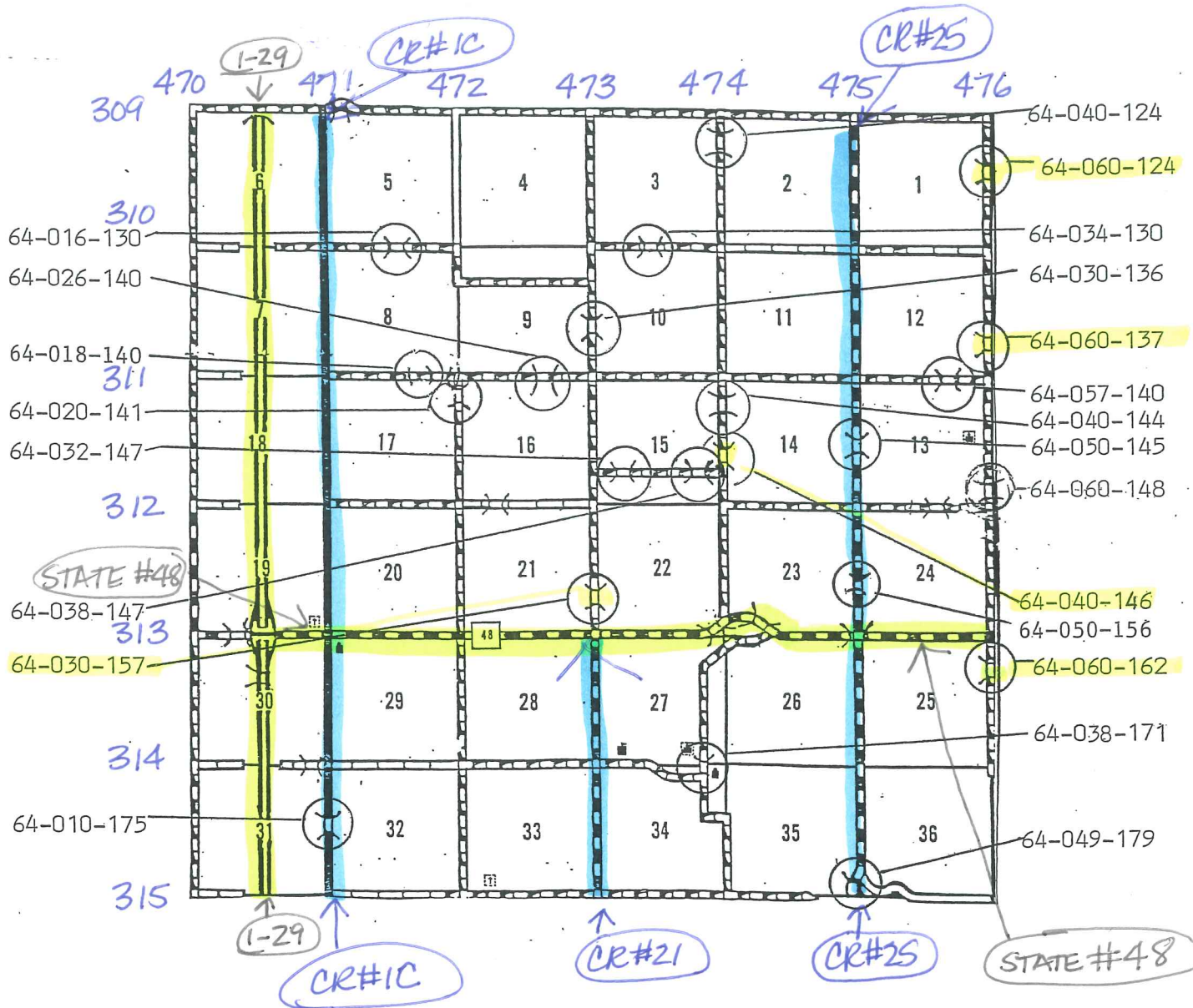


SIOUX VALLEY TOWNSHIP

T 93 N R 48 & 49 W

<u>POSTING</u>	T 93 N R 48 & 49 W	<u>POSTING</u>
LEGAL	64-061-130	64-096-150 LEGAL
LEGAL	64-061-150	64-103-130 ← 20-34-38
14-24-27 →	64-069-130	64-104-150 LEGAL
LEGAL	64-070-130	64-105-140 LEGAL
LEGAL	64-070-179	64-110-169 LEGAL
18-30-35 →	64-092-130	64-114-150 LEGAL
18-30-34 →	64-093-140	64-115-160 LEGAL

UNION COUNTY 2012 BRIDGE INSPECTIONS



SPINK TOWNSHIP

T 93 N R 50 W

PASTING

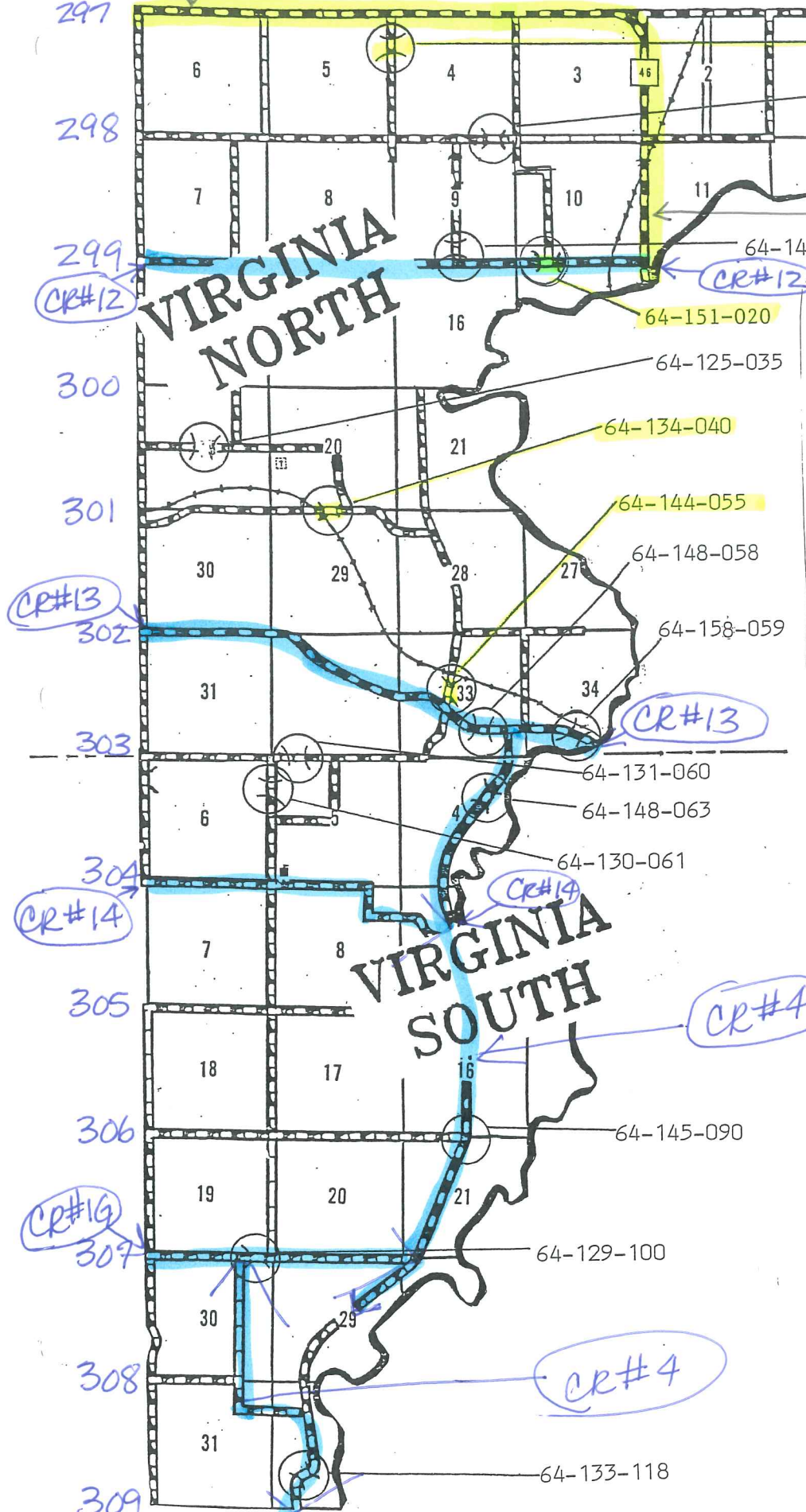
PASTING

LEGAL	64-010-175	64-040-124	LEGAL
LEGAL	64-016-130	64-040-144	LEGAL
LEGAL	64-018-140	64-040-146 ← 10 TON	LEGAL
LEGAL	64-020-141	64-049-179	LEGAL
LEGAL	64-026-140	64-050-145	LEGAL
LEGAL	64-030-136	64-050-156	LEGAL
16-28-32 →	64-030-157	64-057-140	LEGAL
LEGAL	64-032-147	64-060-124 ← 12-20-23	
LEGAL	64-034-130	64-060-137 ← 24-42-43	
LEGAL	64-038-147	64-060-148	LEGAL
LEGAL	64-038-171	64-060-162 ← 10 TON	

STATE #46

485 486
UNION COUNTY 487

2012 BRIDGE INSPECTIONS



64-140-003
64-148-010

STATE #46

64-145-019

64-151-020

64-125-035

64-134-040

64-144-055

64-148-058

64-158-059

64-131-060

64-148-063

64-130-061

64-145-090

64-129-100

64-133-118

VIRGINIA NORTH TOWNSHIP

T 95 N R 48 W

- POSTING
- 64-125-035 LEGAL
- 64-131-060 LEGAL
- 64-134-040 ← 18-30-33
- 64-140-003 ← 22-31-38
- 64-144-055 ← 12-20-23
- 64-145-019 LEGAL
- 64-148-010 LEGAL
- 64-148-058 LEGAL
- 64-151-020 ← 10 TON
- 64-158-059 LEGAL

VIRGINIA SOUTH TOWNSHIP

T 94 N R 48 W

- POSTING
- 64-129-100 LEGAL
- 64-130-061 LEGAL
- 64-133-118 LEGAL
- 64-145-090 LEGAL
- 64-148-063 LEGAL