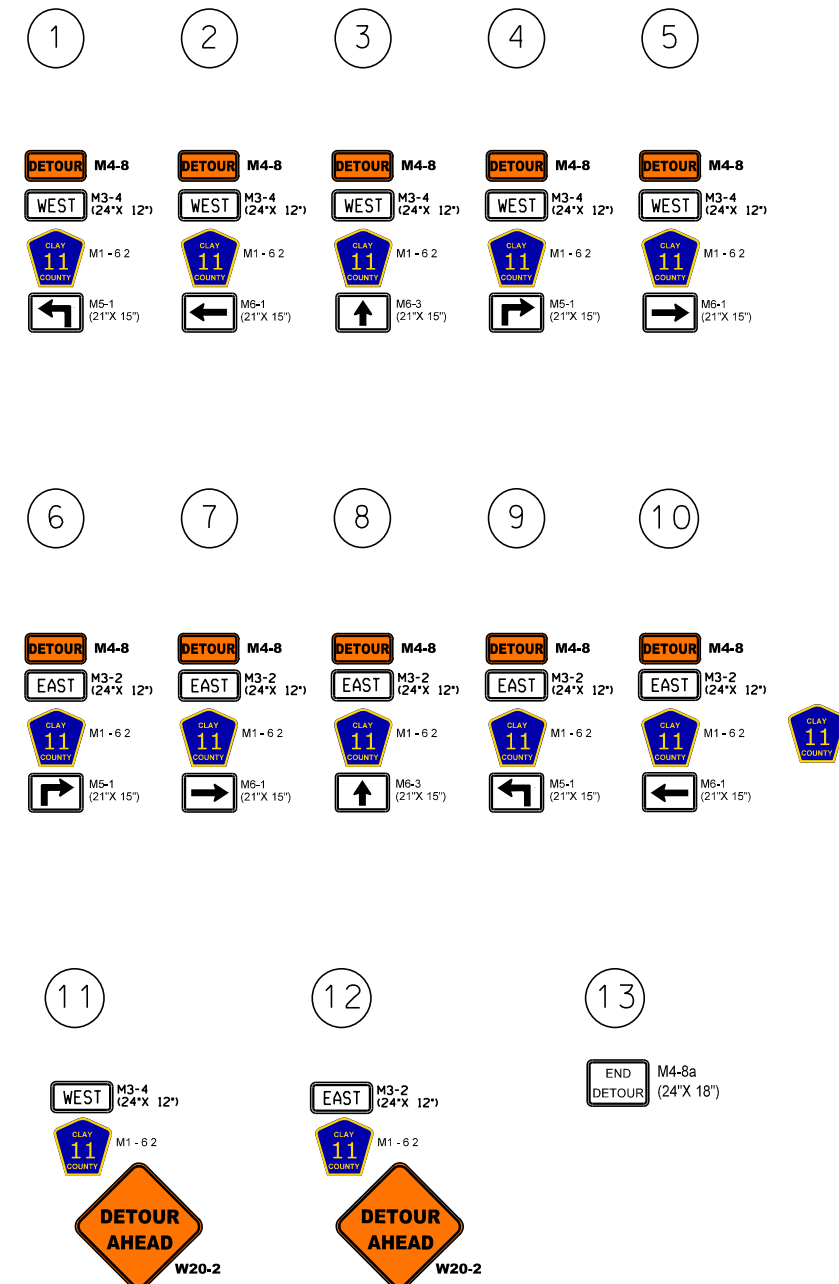
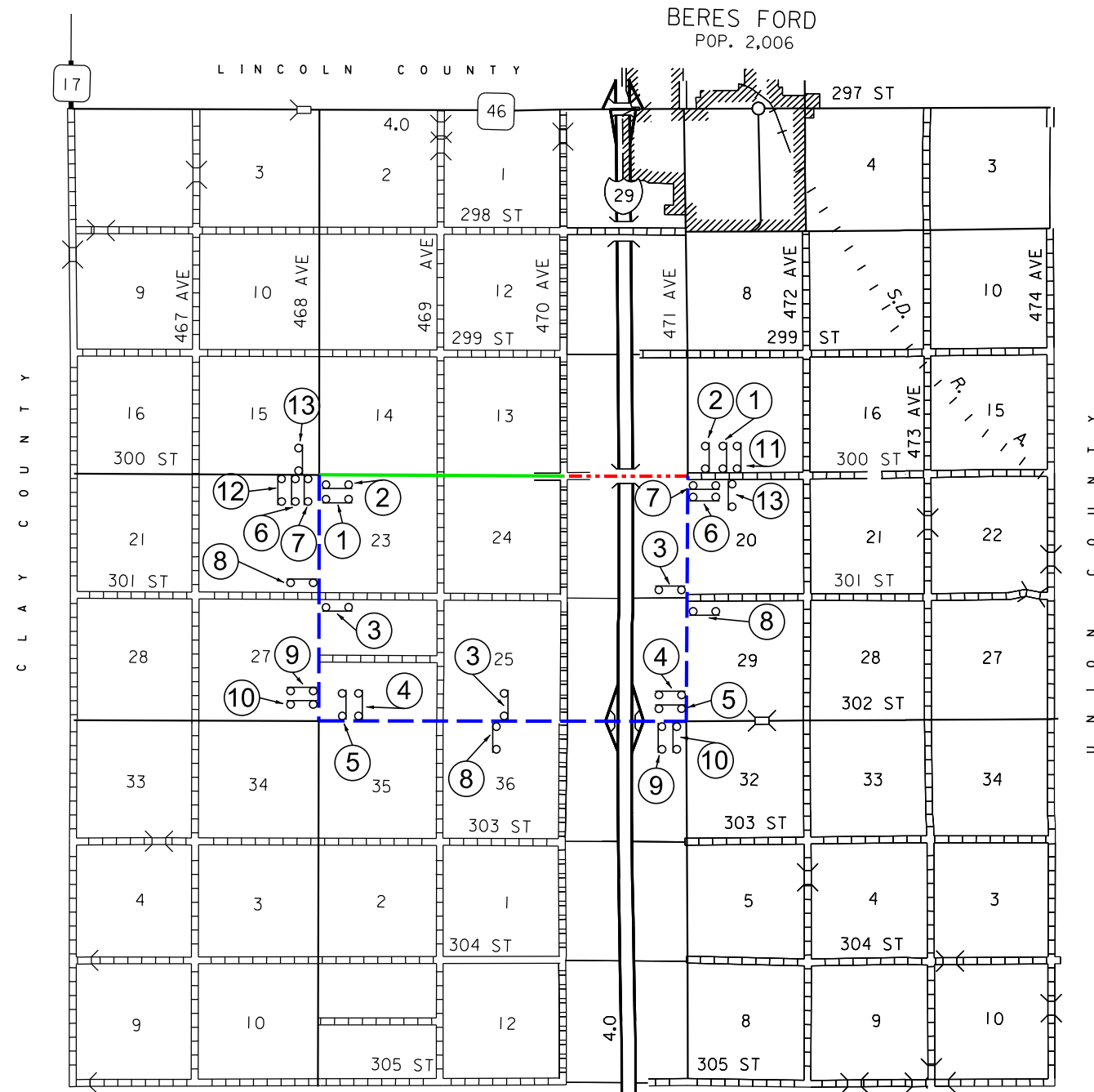





DETOUR ROUTE



 LOCAL TRAFFIC ONLY
 DETOUR ROUTE
 PROJECT

NOTES:
 DETOUR SIGNS WILL BE SPACED 100 - 150' FROM OTHER SIGNS.
 DETOUR SIGNS WILL NOT OBSCURE EXISTING SIGNS.